



Severe Weather

Do Now

You have 15 minutes to complete today's Do Now Assignment. Get a Chromebook and go to the class website.

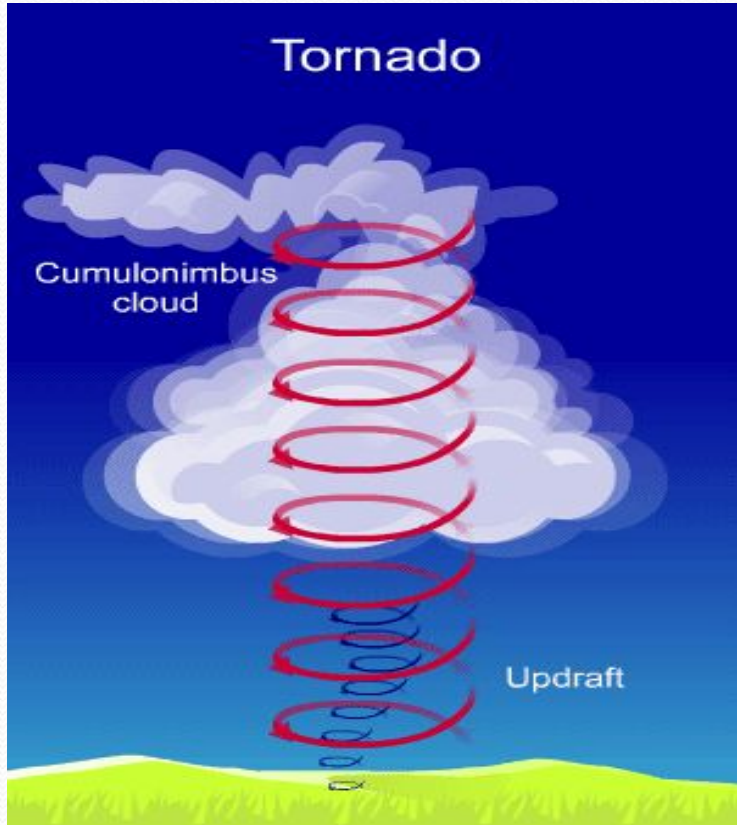
Click on the **Weather Map Practice** link

Submit the assignment before the timer goes off. If you finish early, work quietly on you Weather Watchers Project.

What is a Tornado?



How Do Tornadoes Form?



- Warm, humid air **collides** with cold, dry air
- The warm air **rises up** through the cold air creating an **updraft** because of a **LOW PRESSURE SYSTEM**
- If this updraft begins **spinning**, it can turn into a tornado

Damage Caused by Tornadoes

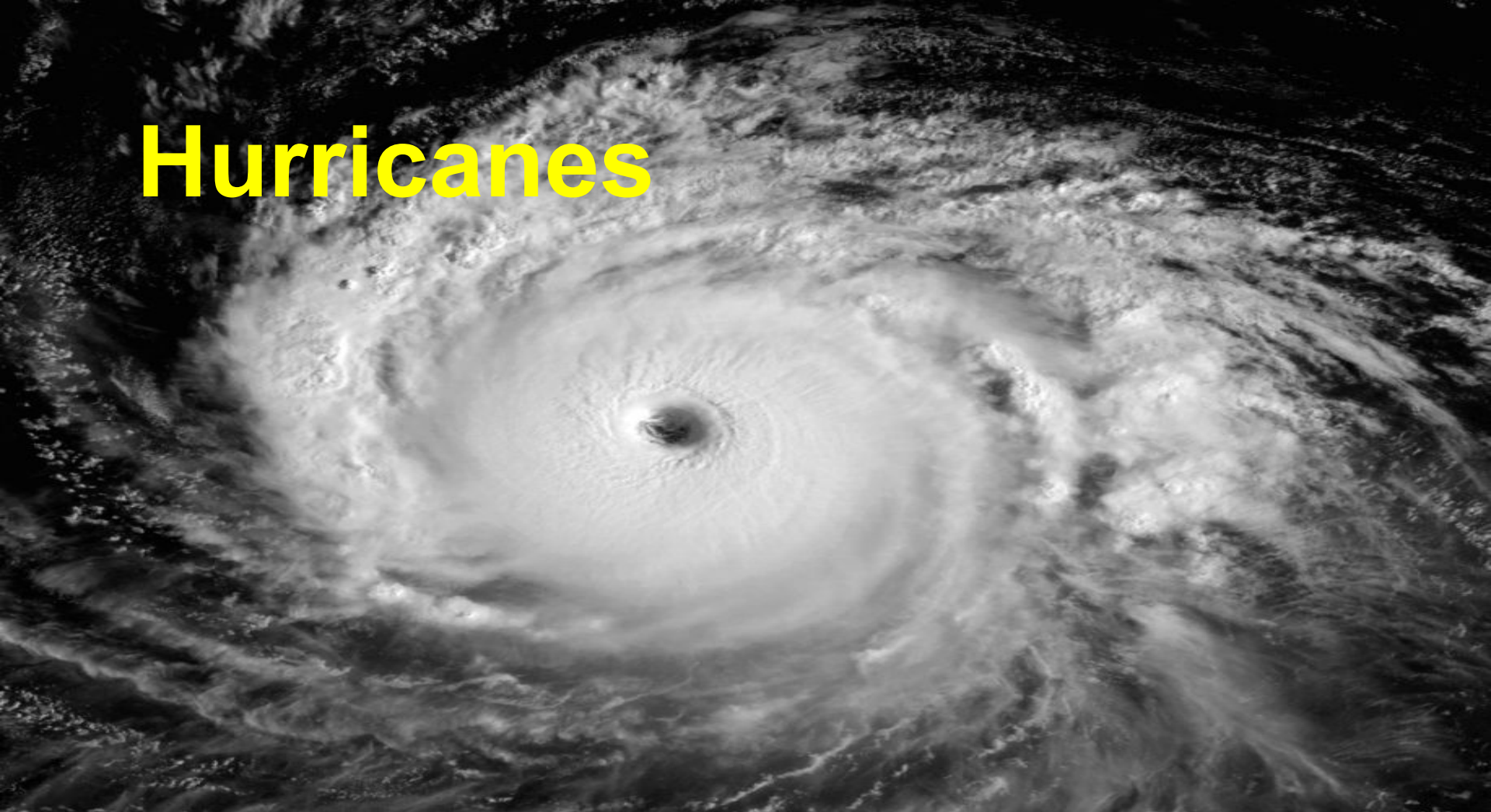
- Extremely high **winds** can tear buildings apart, slip cars, and even suck the water out of a riverbed



Wait...how exactly does it form?

- <http://news.bbc.co.uk/2/hi/science/nature/7533941.stm>

Hurricanes



Damage Caused by

Hurricanes

Most from the **storm surge** and flooding!!

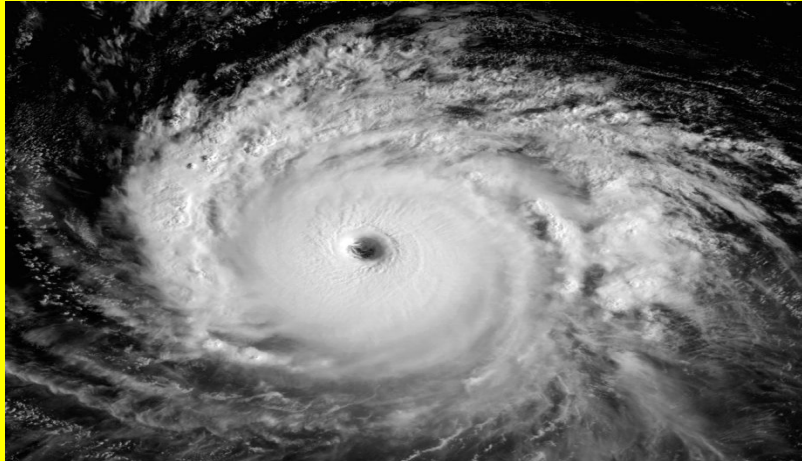


Storm surge pushing water ashore during hurricane

Historic NWS Collection Credit: U. S. Navy

FAST FACT

The word “hurricane” comes from the Taino Native American word, *Hurucane*, meaning “evil spirt of the wind.” The first time anyone flew into a hurricane happened in 1943 in the middle of WWII.



Wait...how exactly does it form?

- <http://news.bbc.co.uk/2/hi/science/nature/7533909.stm>

Exit Ticket

Answer the questions below about the severe weather you chose:

1. What causes it?
2. What region is most susceptible?
3. What is the source of the damage caused by this severe weather?

1. ¿Qué produce el mayor daño durante un huracán?
2. ¿Qué causa un huracán?
3. ¿Cuál es la escala de clasificación de intensidad para tornados?
4. ¿Qué región geográfica es más susceptible a los tornados?
5. ¿Cómo los meteorólogos rastrean las tormentas?