

## Exploring Climatographs.

**Directions:** Study the three climatographs on the following pages. Answer the 7 questions below about each climatograph.

1. What is on the x-axis?
2. There are 2 y-axes... What is on each?
3. Using what we know about graphs, what are the indep. and dep. variables?
4. Complete the following sentence based on #3:

The \_\_\_\_\_ and \_\_\_\_\_ depend on the \_\_\_\_\_ for a particular location.

5. During what month is the rainfall the highest?
6. During what month is the temperature the highest?
7. Do precipitation and temperature seem to be related in this city? Explain your answer.

### Annual Climatology: Charlotte, NC (CLT)

Elev: 222.2 m Lat: 35° 13'N Long: 80° 57'W

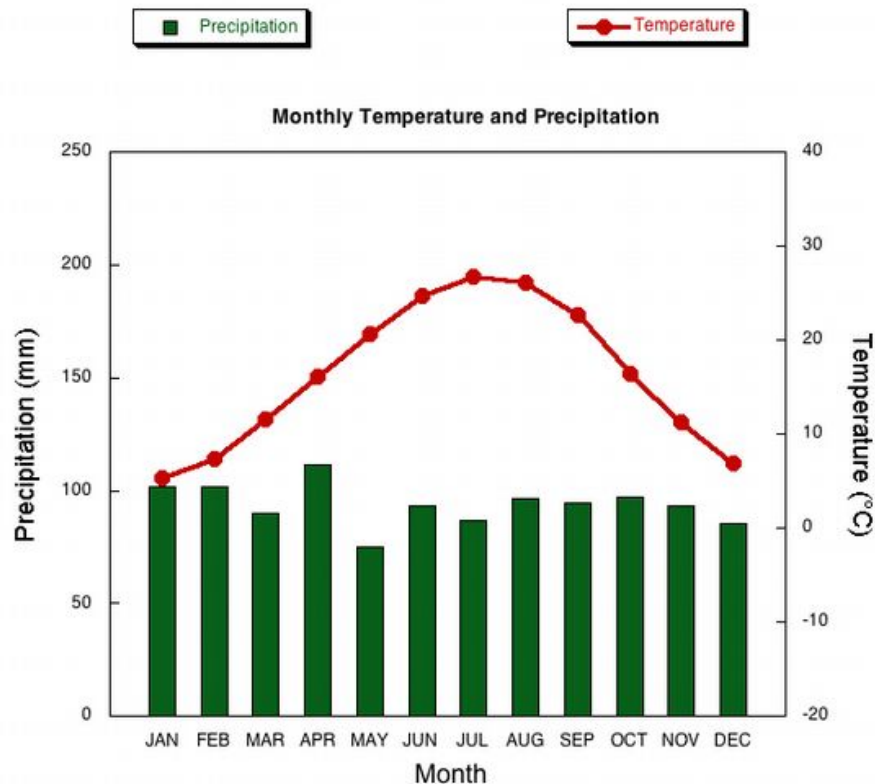
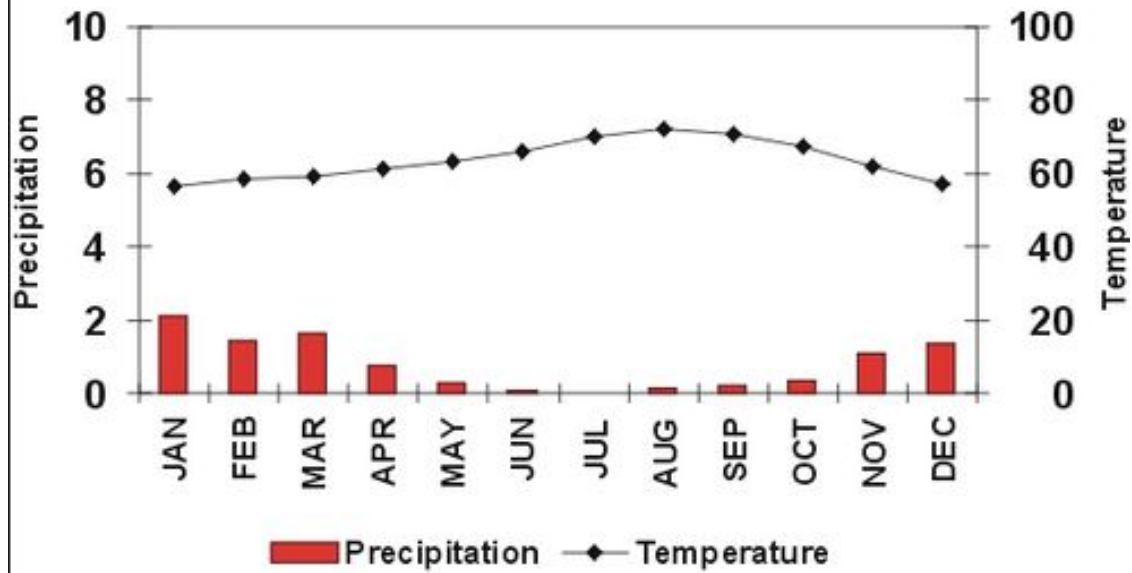


Figure 1: Average Temperatures and Precipitation 1971-2000. (NCDC Data)

## San Diego, California



Lat.: 32° 44' N

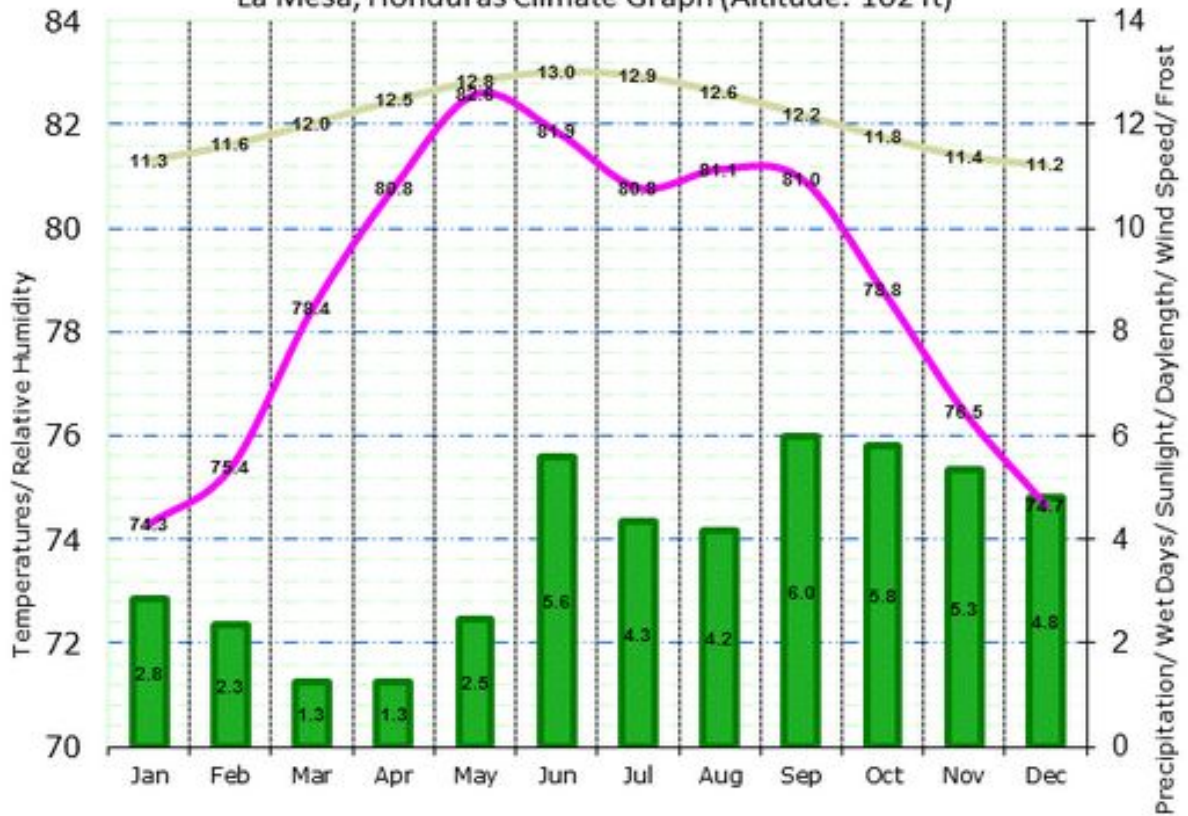
Long.: 117° 10' W

Elevation: 13 ft. asl

Total Annual Precip.: 9.32"

Avg. Annual Temp.: 63.8°F

La Mesa, Honduras Climate Graph (Altitude: 102 ft)



■ Precipitation (in)    
 — Average Temp (°F)    
 — Daylength (Hours)

ClimaTemps